

For  
**SALE**

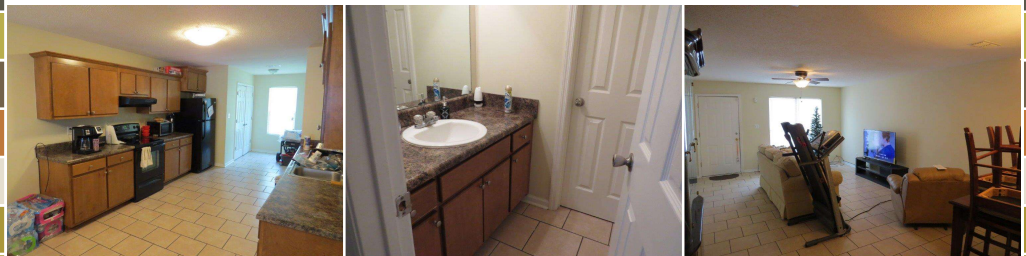
## Contact Office for Price

Multi-Family Duplex  
Year Built Approx. 2006  
6 Total Bedroom(s)  
4 Total Bath(s)  
Approx. 2,678sq. ft.  
Forced Air Heat  
Central Air  
Lot approx. 0.62 Acres  
Ceramic Tile Flooring  
Open Kitchen  
Large Lot

Parcel ID:

00367/00002/018

## 2,600+ SF Duplex on 0.62 Acres



105 Embleton Ct. | Albany, GA 31721

**Features Include:** 2,600+ SF duplex with 6 Bedrooms/2 Baths. Interior includes open kitchen with ceramic tile flooring, separate laundry and extra large closets. Placed on over half acre lot. Great addition to your rental portfolio!

**Additional Information:** This property is just one out of 105 properties being offered for sale resulting from a US Marshals seizure of Christopher Whitman properties. Don't miss the opportunity to build your rental and/or development portfolio from this rare government sale of real estate.

Justin Ochs, VP of National Development | [800-729-6466](tel:800-729-6466) | [info@soldoncompass.com](mailto:info@soldoncompass.com)